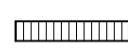
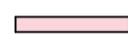

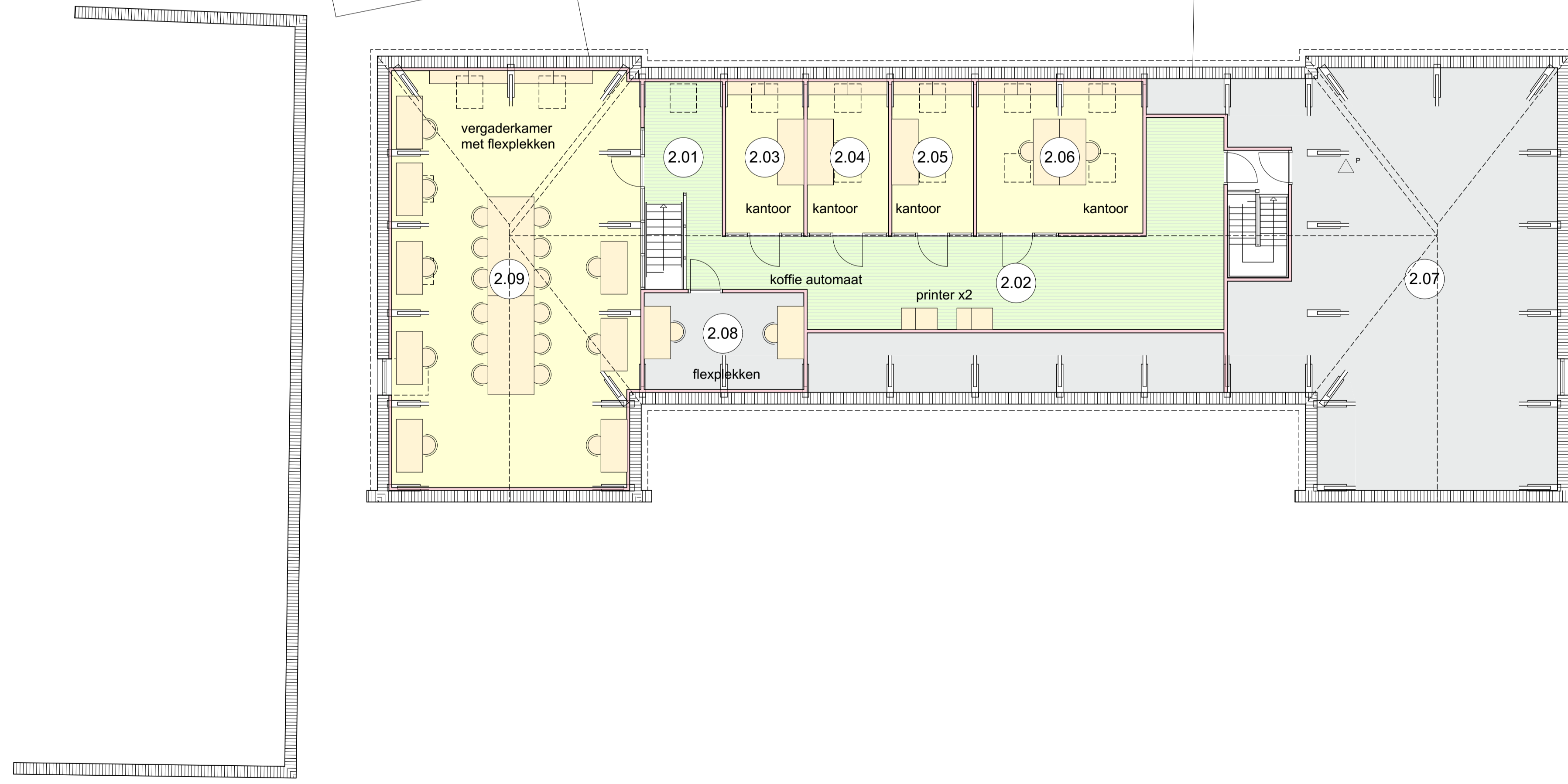
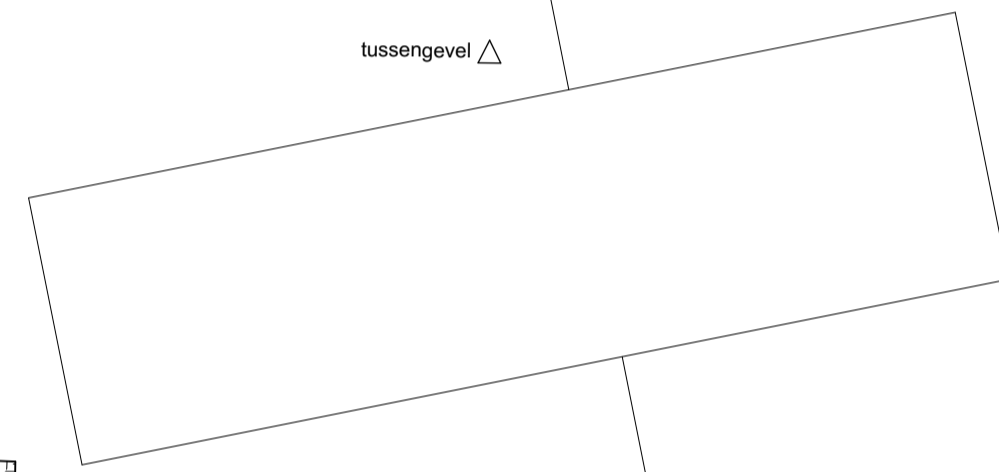
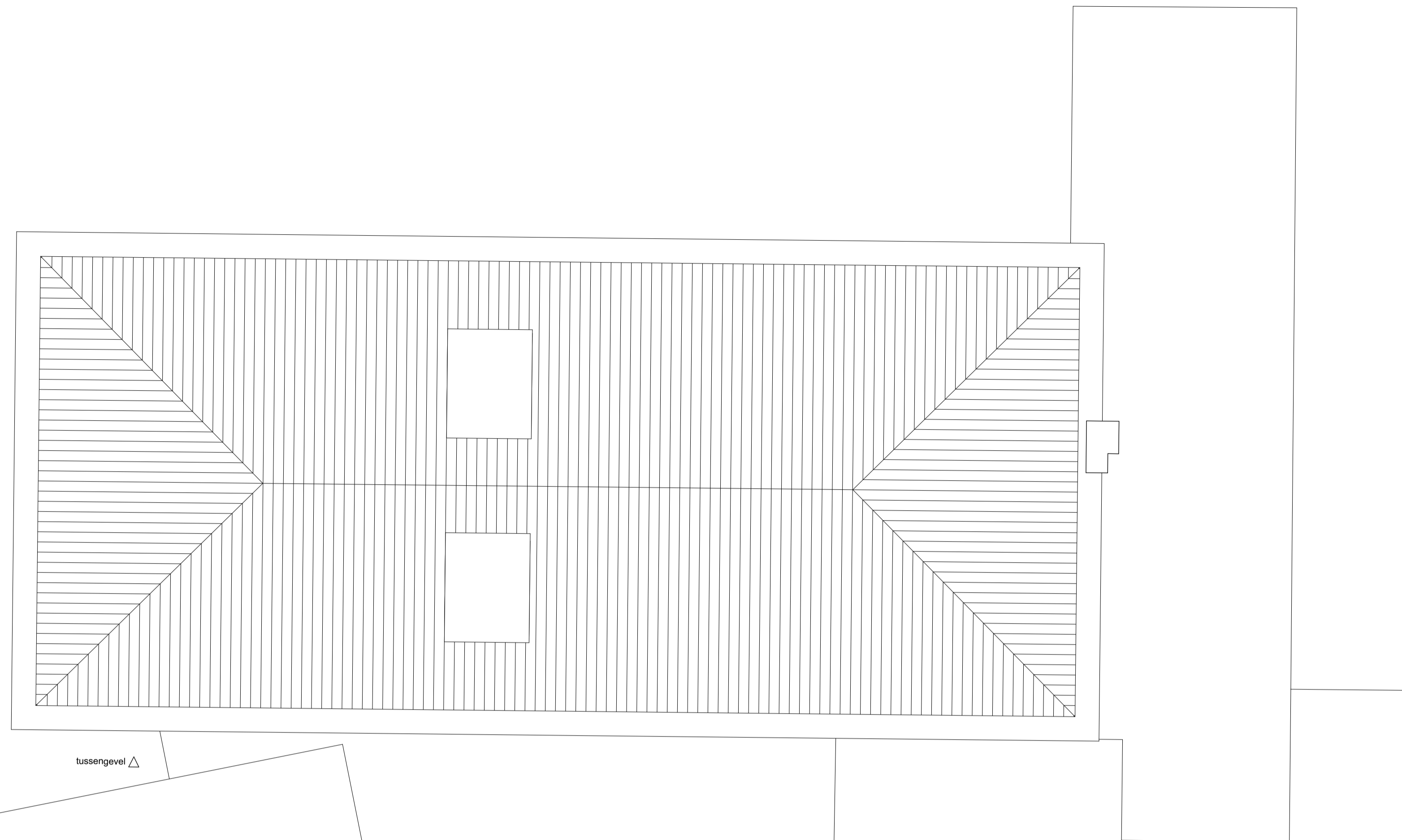


renvooi

- 2.01 gang
- 2.02 gang
- 2.03 kantoorruimte
- 2.04 kantoorruimte
- 2.05 kantoorruimte
- 2.06 kantoorruimte
- 2.07 zolder / technische ruimte
- 2.08 kantoorruimte
- 2.09 kantoorruimte

-  steenachtige muur
-  lichte scheidingswand / voorzetwand
-  draagbaar blusapparaat



Verbouw Radesingel 6
Gemeente Groningen

Tweede verdieping

Sax Architecten

31040 DO103--

Fase Definitief ontwerp
Getekend 26-10-2018
Wijziging
Bestand 31040.pln
Formaat en schaal A1 | 1:100

Hereplein 6 | 9711 GA Groningen | (050) 318 21 02
mail@saxarchitecten.nl | www.saxarchitecten.nl